 <p> FAX: (255 22) 2844300, 2844302 PHONE: (255 22) 2198100 AFS: HTDQYOYO Email: tcaa@tcaa.go.tz, ais@tcaa.go.tz Website: www.tcaa.go.tz </p>	<p align="center"> UNITED REPUBLIC OF TANZANIA TANZANIA CIVIL AVIATION AUTHORITY Aeronautical Information Management Nyerere/ Kitunda Road Junction Aviation House, 1st Floor, P.O. Box 2819, DAR ES SALAAM </p>	<p align="center"> AIP Supplement 35/25 Published on 03 Oct 2025 </p>
Document No: TCAA/FRM/ANS/AIM - 56	Title: AIP Supplement	Page 1 of 3

AERODROMES (AD)

S35 Kigoma Airport – HTKA

Kigoma Airport (HTKA) is undergoing Apron rehabilitation commenced on 1st September 2025 and expected to be completed on 30^h December 2025. The work will be implemented in two phases, focusing on the expansion of the apron and closure of taxiways to improve airside infrastructure.

Phase 1: 03 October 2025 to 31 October 2025

- Reduction of Apron Area:
The current apron area of 15,000 m² will be reduced to 6,400 m².
The new dimensions of the apron will be 80 meters (width) by 80 meters (length).
The apron will accommodate two aircraft parking stands, including one designated for refueling.
- Taxiway Status:
Taxiway B (TWYB) will be closed.
Taxiway A (TWYA) will be opened and operational.

Phase 2: From 1 November 2025 to 30 December 2025

- Taxiway Status:
Taxiway A (TWY A) will be closed.
Taxiway B (TWY B) will be opened and operational.
- Finalization of Apron Works:
Continued finishing work including marking and signage updates

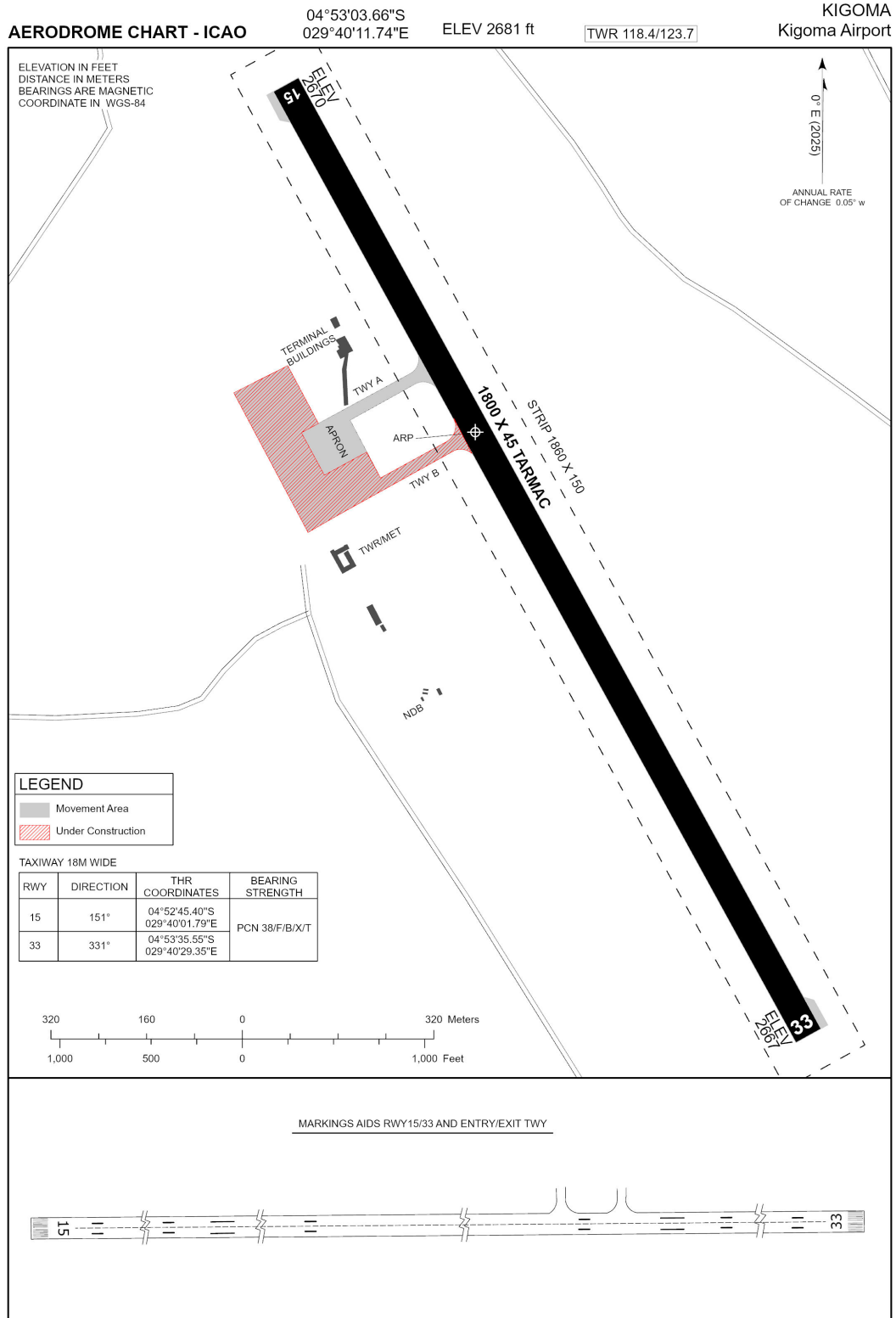
Operational Notes:

- Aircraft Night Stops:
As with Phase 1, operators intending to night-stop must provide at least 12 hours prior notice to ensure apron availability and coordination.
- Movement Restrictions:
Aircraft will be directed via TWY A or TWY B by Air Traffic Controller and ground Marshaller will give signal to a Pilot for aircraft parking stand assignments.

(Cancel AIP SUP 30/25)

See Attachments to this AIP Supplement

ATTACHMENT PHASE ONE TO AIP SUP 35/25



TANZANIA CIVIL AVIATION AUTHORITY

03 Oct 2025

ATTACHMENT PHASE TWO TO AIP SUP 35/25

AERODROME CHART - ICAO

04°53'03.66"S
029°40'11.74"E

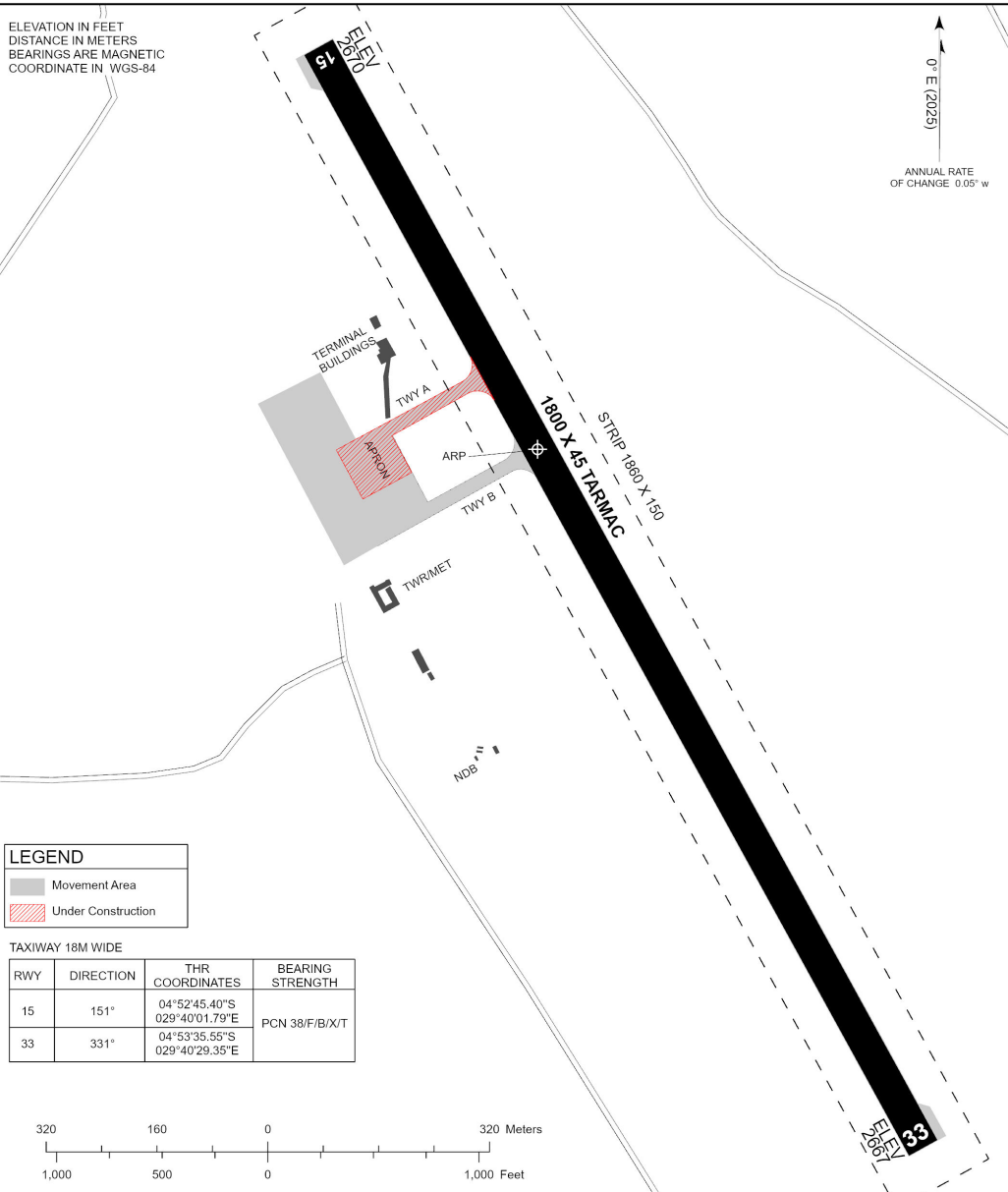
ELEV 2681 ft

TWR 118.4/123.7

KIGOMA
Kigoma Airport

ELEVATION IN FEET
DISTANCE IN METERS
BEARINGS ARE MAGNETIC
COORDINATE IN WGS-84

0° E (2025)
ANNUAL RATE
OF CHANGE: 0.05° w



LEGEND			
	Movement Area		
	Under Construction		

TAXIWAY 18M WIDE

RWY	DIRECTION	THR COORDINATES	BEARING STRENGTH
15	151°	04°52'45.40"S 029°40'01.79"E	PCN 38/F/B/X/T
33	331°	04°53'35.55"S 029°40'29.35"E	



MARKINGS AIDS RWY15/33 AND ENTRY/EXIT TWY



TANZANIA CIVIL AVIATION AUTHORITY

01 Nov 2025