 <p> Fax: (255) 22 2844300, 2844302 PHONE: (255) 22 2198100, 2844291 AFS: HTDQYOYO E-MAIL: tcaa@tcaa.go.tz, ais@tcaa.go.tz Website: www.tcaa.go.tz </p>	UNITED REPUBLIC OF TANZANIA TANZANIA CIVIL AVIATION AUTHORITY Aeronautical Information Management Nyerere/ Kitunda Road Junction Aviation House, 1st Floor, P.O. Box 2819, DAR ES SALAAM	AIRAC AIP Supplement 04/16 18 February 2016
Document No: TCAA/FRM/ANS/AIS-56	AIP Supplement	Page 1 of 3

Effective Date: 28 April 2016

AERODROME

S04 Abeid Amani Karume International Airport – HTZA

The Abeid Amani Karume International Airport new RNAV GNSS Instrument Approach procedure for RWY 18 has been flight simulated but not flight checked and will be available for use effective from 28 April 2016.

Operators may use the procedure at their own discretion. Additionally Instrument rated pilots flying GPS equipped aircraft may fly the procedure under the following conditions;

- (i) The procedure is available for use on trial basis,
- (ii) On landing pilots are urged to give comments to the Air traffic control unit at Abeid Amani Karume International Airport or TCAA Headquarters on the suitability and recommend any improvements or modifications that may be made to the procedure.

Details of the RNAV GNSS procedures are attached to this supplement.

(See attachment 1 and 2 to this AIP Supplement)

Attachment 1

**APPROACH PROCEDURE DATA INTEGRATORS FOR ABEID AMANI KARUME
INTERNATIONAL AIRPORT (HTZA)**

RNAV (GNSS) INSTRUMENT APPROACH PROCEDURE RWY 18:

Seq Number	PATH Descriptor	Way-point Identifier	Fixes	Coordinates	Status	Altitude Constraint	Speed Constraint
01	IF	NEVAB	IAF	06° 01' 06.113" S 039° 18' 19.274" E	Fly-By	+2000ft	-230kt
01	IF	OKPOL	IAF	05° 55' 42.331" S 039° 11' 43.676" E	Fly-By	+2000ft	-230kt
01	IF	UDNUR	IAF	06° 02' 18.345" S 039° 06' 20.205" E	Fly-By	+2000ft	-230kt
02	TF	IMTOM	IF	06° 01' 42.262" S 039° 12' 19.799" E	Fly-By	+2000ft	-
03	TF	IMVIV	FAF	06° 06' 42.203" S 039° 12' 49.799" E	Fly-By	+2000ft	-
04	TF	RW18	MAPt	06° 12' 39.580" S 039° 13' 25.620" E	Fly-Over	@103ft	-
05	CA					@2000ft	-230kt
05	DF	UBVES	MAHF	06° 12' 03.011" S 039° 38' 35.744" E	Fly-Over	+ FL30	-230kt

RNAV (GNSS) HOLDINGS:

Way-point Name	Status	Inbound magnetic course (True value)	Leg length (MIN)	Turn direction	Altitude Constraint	Speed Constraint
OKPOL	Fly-over	176° (174°)	1	LEFT	+2000ft	-230kt
UBVES	Fly-over	266° (264°)	1	LEFT	+FL30	-230kt

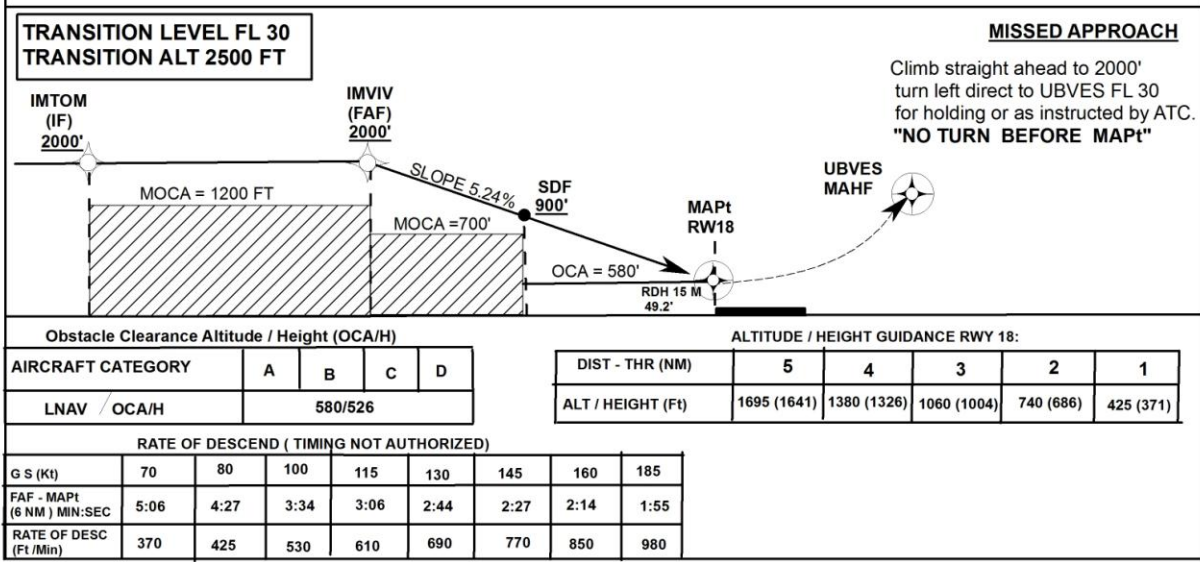
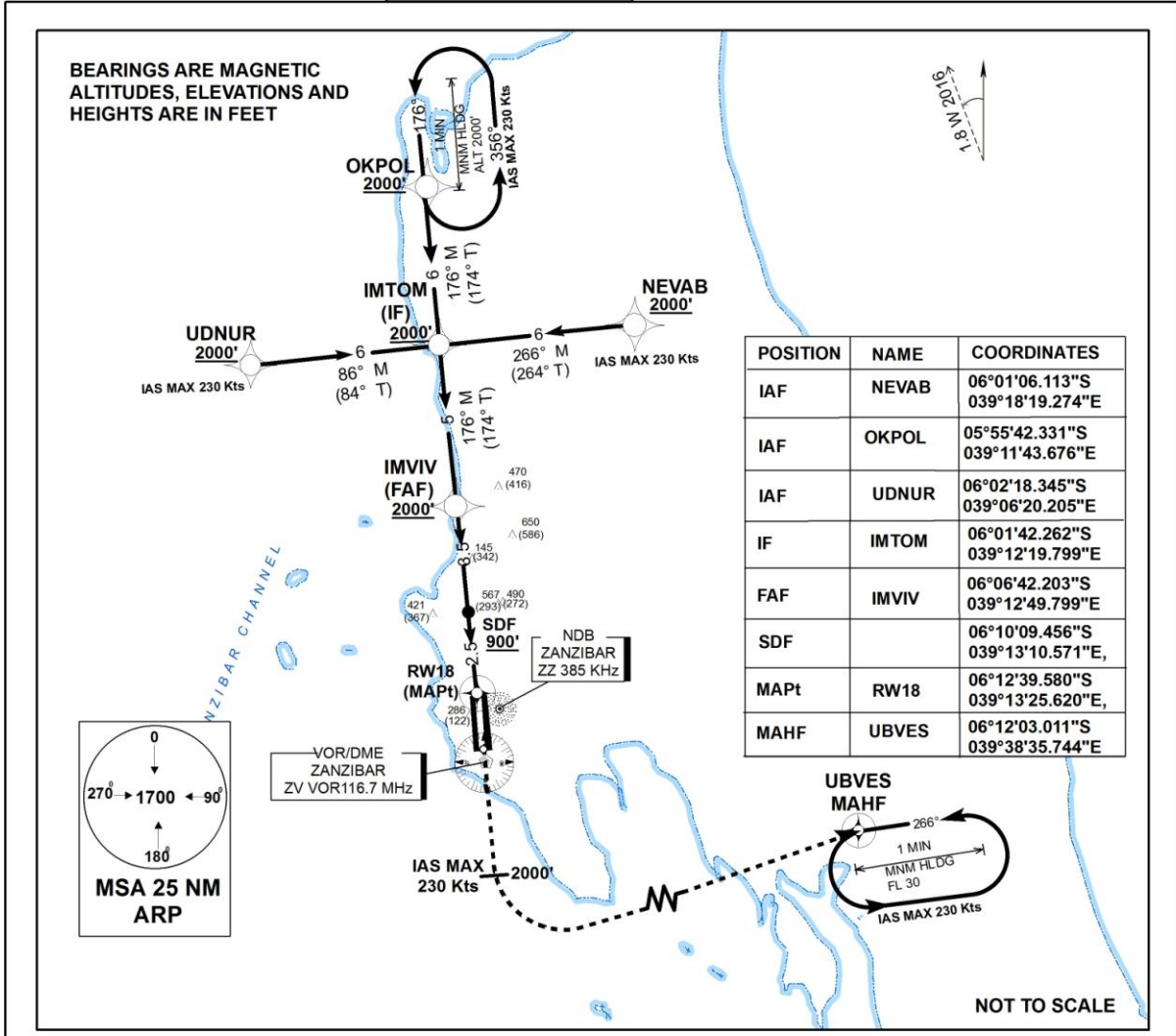
Attachment 2

INSTRUMENT APPROACH
PROCEDURE CHART - ICAO
ACFT CATEGORY A, B, C AND D

HEIGHTS ARE RELATED TO
THR RWY 18 (ELEV 54 FT)
AERODROME ELEV 54 FT

APP 121.2
TWR 121.2

ABEID AMANI KARUME INTL AIRPORT/
HTZA
RNAV (GNSS) RWY 18



Effective 28 April 2016

TANZANIA CIVIL AVIATION AUTHORITY

Attachment to AIP SUP 04/16