



FAX: (255 22) 2124914, 2118905
PHONE: (255 22) 2115079/80, 2111951.
AFS: HTDQYOYO
Email: tcaa@tcaa.go.tz, ais@tcaa.go.tz
Website: www.tcaa.go.tz

UNITED REPUBLIC OF TANZANIA
TANZANIA CIVIL AVIATION AUTHORITY
Aeronautical Information Services
P.O. Box 2819, DAR ES SALAAM
Tetex House, 4th Floor, Pamba Road
AERONAUTICAL INFORMATION SERVICES

AIP
Supplement 20/10
14 December 2010

Document No:
TCAA/FRM/ANS/AIS-56

Title: **AIP Supplement**

Page 1 of 5

AERODROME (AD)

S20 Abeid Amani Karume International Airport – HTZA

New instrument approach procedures for ZV VOR/DME RWY 36 have been established as detailed in the attachment **A, B, C and D** to this supplement.
(Cancel NOTAM A0348/10).

ATTACHMENT A TO SUP 20/2010

ZV VOR APPROACH RWY 36 CAT A – B & C – D

INSTRUMENT APPROACH PROCEDURE DATA:

| | |
|---------------------|----------|
| Transition level | FL30 |
| Transition altitude | 2500 FT |
| MSA NE | 1700 FT |
| MSA SE | 1700 FT |
| MSA SW | 1700 FT |
| MSA NW | 1700 FT |
| Aerodrome elevation | 54 FT |
| Threshold elevation | 44 FT |
| RWY heading (T) | 354° (T) |
| Variation | 2° W |
| RWY heading (M) | 356° (M) |

HOLDING:

| | |
|--------------------------|---|
| Holding point | ZV VOR 116.7 MHZ 0.4379NM FROM THR RWY 36 |
| MNM holding altitude | 1700 FT |
| Outbound leg | 1MIN |
| Specified inbound track | 356°M |
| Direction of turn | RIGHT |
| Specified outbound track | 176° M |

INITIAL APPROACH:

From overhead ZV VOR execute a right hand race track on outbound heading 176° M for 3 minutes aircraft CAT A and B, 2 minutes for aircraft CAT C and D, descending to 1500 FT QNH. Complete the racetrack pattern to intercept final approach track 356° M (R176)

FINAL APPROACH:

On final approach track continue descent to OCA (H) 490(446)

MISSED APPROCH POINT

ZV VOR (*Timing not authorized to define the missed approach point*)

MISSED APPROACH PROCEDURE

Climb straight ahead at 2.5% to 900 FT QNH, turn left, continue climb to 1700FT return to ZV VOR and hold or proceed as instructed by ATC.

DESCENT MINIMA

| ACFT CAT | A | B | C | D |
|----------|----------|---|-----------|---|
| ST-IN | 490(446) | | | |
| CIRCLING | 780(726) | | 880 (826) | |

ATTACHMENT B TO SUP 20/2010

ZV VOR / DME APPROACH RWY 36 CAT A –B, C- D

FACILITY: ZV VOR/DME (116.7 MHZ) 0.4379NM FROM THR RWY 36

| | |
|---------------------|----------|
| Transition Level | FL30 |
| Transition Altitude | 2500 FT |
| MSA NE | 1700 FT |
| MSA SE | 1700 FT |
| MSA SW | 1700 FT |
| MSA NW | 1700 FT |
| Aerodrome Elevation | 54 FT |
| Threshold Elevation | 44 FT |
| RWY Heading (T) | 354°(T) |
| Variation | 2° W |
| RWY Heading (M) | 356° (M) |

HOLDING:

| | |
|--------------------------|----------|
| Holding Point | ZV VOR |
| MNM Holding Altitude | 1700 FT |
| Outbound Leg | 1 MIN |
| Specified Inbound Track | 356° (M) |
| Direction of Turn | RIGHT |
| Specified Outbound Track | 176° (M) |

INITIAL APPROACH

From overhead ZV VOR/DME execute a right hand race-track on outbound Heading 176° M to 10 DME descending to 1500 feet QNH. Complete the race-track pattern to intercept final approach track 356° M.

INTERMEDIATE APPROACH

Flat Segment at 1500FT from 10 DME TO 4 DME.

FINAL APPROACH

From FAF, 4 DME, descend to the OCA/H(450/406)

DESCENT GRADIENT 5.2% THUS:

| | | | | | |
|--------|-----------|-----------|---------|---------|---------|
| DME | 4 | 3 | 2 | 1 | 0 |
| ALT/HT | 1500/1456 | 1180/1136 | 865/821 | 550/506 | 240/196 |

MISSED APPROACH:

MAPT: ZV VOR/DME .

Climb straight ahead at 2.5% to 900 FT; turn left continue climb to 1700ft return to ZV VOR and hold or proceed as instructed by ATC.

DESCENT MINIMA

| | | | | |
|----------|----------|---|----------|---|
| ACFT CAT | A | B | C | D |
| ST-IN | 450(406) | | | |
| CIRCLING | 780(726) | | 880(826) | |

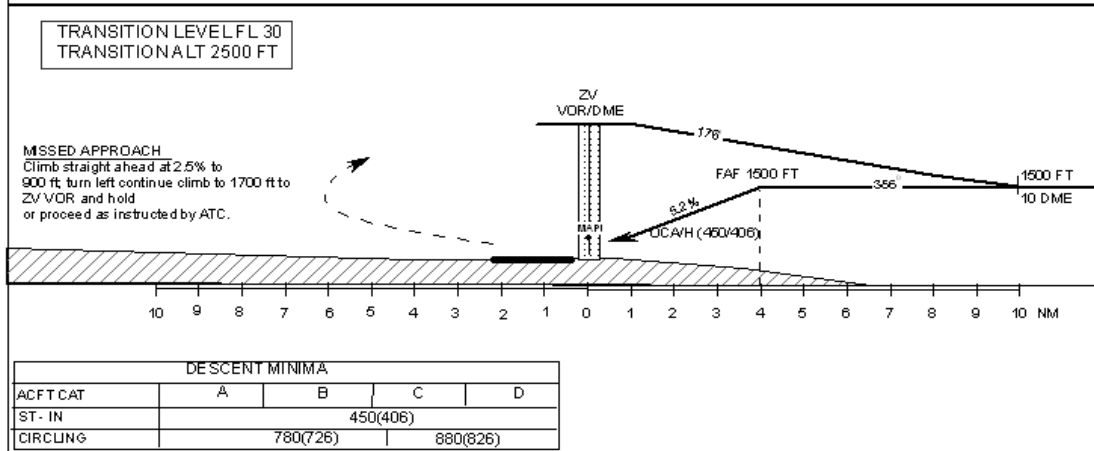
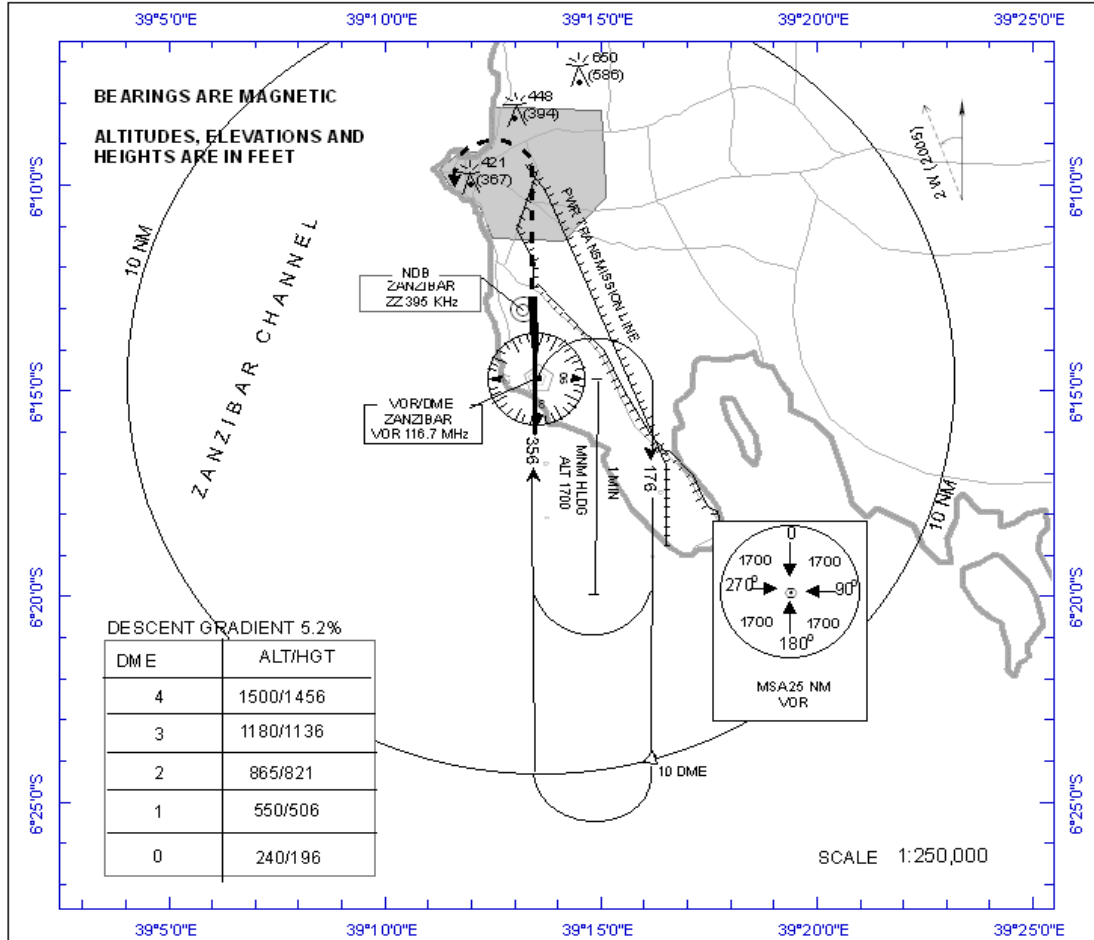
ATTACHMENT C TO SUPP. 20/2010

INSTRUMENT APPROACH
CHART - ICAO
CATEGORY A-B AND C-D

AERODROME ELEV 54 FT
HEIGHTS RELATED TO
THR RWY 36 (ELEV 44 FT)

TWR 121.2
APP 121.2

ABEIDAMAN KARUME
INTERNATIONAL AIRPORT ZANZIBAR
ZV VOR/DME RWY 36



ATTACHMENT D TO SUPP 20/2010

INSTRUMENT APPROACH
CHART - ICAO
CATEGORY A - B AND C - D

AERODROME ELEV 54 FT
HEIGHTS RELATED TO
THR RWY 36 (ELEV 44 FT)

TWR 121.2
APP 121.2

ABEID AMAN KARUME
INTERNATIONAL AIRPORT ZANZIBAR
ZV VOR RWY 36

